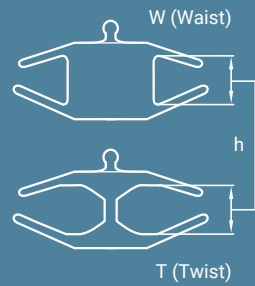
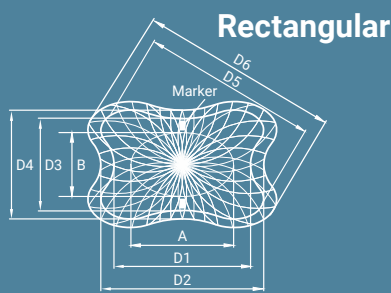
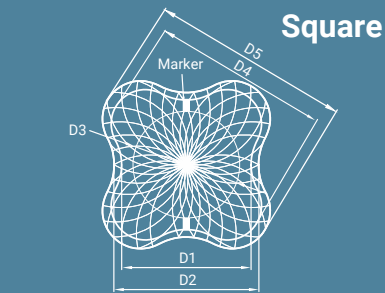


Occlutech PLD

Product specifications



Square PLD Dimensions:

- D1 - Proximal disc length
- D2 - Distal disc length
- D3 - Waist diameter (Only for Square W*)
- D4 - Diagonal length of proximal disc
- D5 - Diagonal length of distal disc

Rectangular PLD Dimensions:

- D1xD3 - Proximal disc length to width
- D2xD4 - Distal disc length to width
- AxB - Waist length to width (Only for Rectangular W*)
- D5 - Diagonal length of proximal disc
- D6 - Diagonal length of distal disc

General:

- Min. ID - Recommended minimum inner dimension for delivery sheath
- ODS - Occlutech Delivery System**
- h - Height of the waist (3 mm for all sizes)

Article No.	[mm]	[mm]	[mm]	[mm]	[mm]	Sheath Size** [F]	Pusher Article No. (color)***	
							Pistol Pusher	Flex Pusher
Square W*		D1	D2	D3	D4	D5		
60PLD04W	7.5	9	4	11.5	13	6	55PP125L	50FP100L
60PLD05W	8.5	10	5	12.5	14	6	55PP125L	50FP100L
60PLD06W	9.5	11	6	14	16	6	55PP125L	50FP100L
60PLD07W	10.5	12	7	16	17	7	55PP125L	50FP100L
Square T*		D1	D2	D4	D5			
62PLD03T	7	8	10	11.5		6	55PP125L	50FP100L
62PLD05T	8.5	10	12.5	14		6	55PP125L	50FP100L
62PLD07T	11	12	16	17		7	55PP125L	50FP100L
Rectangular W*		AxB	D1xD3	D2xD4	D5	D6		
61PLD04W	4x2	8x6	9x7	10	11.5	6	55PP125L	50FP100L
61PLD06W	6x3	10x7	11x8	12.5	14	6	55PP125L	50FP100L
61PLD08W	8x4	12x8	14x10	15	16.5	7	55PP125L	50FP100L
61PLD10W	10x4	14x8	16x10	17	19	8	55PP165L	50FP120L
61PLD12W	12x5	16x9	17x10	19	21	9	55PP165L	50FP120L
61PLD14W	14x6	19x11	21x13	22	24	9	55PP165L	50FP120L
61PLD16W	16x8	20x12	23x14	24.5	26.5	10	55PP165L	50FP120L
61PLD18W	18x10	22x14	24x16	26.5	28.5	10	55PP165L	50FP120L
Rectangular T*		D1xD3	D2xD4	D5	D6			
63PLD05T	9x6	10x8	11.5	13		6	55PP125L	50FP100L
63PLD07T	11x8	12x9	14	16		7	55PP125L	50FP100L
63PLD10T	14x8	16x10	17	19		8	55PP125L	50FP100L
63PLD12T	16x9	17x11	19	21		9	55PP165L	50FP120L

Availability subject to regulatory approval.

* W and T represent the types of connections between the discs. W stands for waist and T stands for twist.

** Compatible Occlutech Delivery System (ODS) includes: ODS Version 1, 110 cm.

*** Occlutech PLD occluder is compatible with both Flex Pusher and Pistol Pusher, appropriate pusher is provided with the occluder by Occlutech.



Occlutech International AB
Landskronavägen 2, SE-252 32 Helsingborg, Sweden
order@occlutech.com, www.occlutech.com



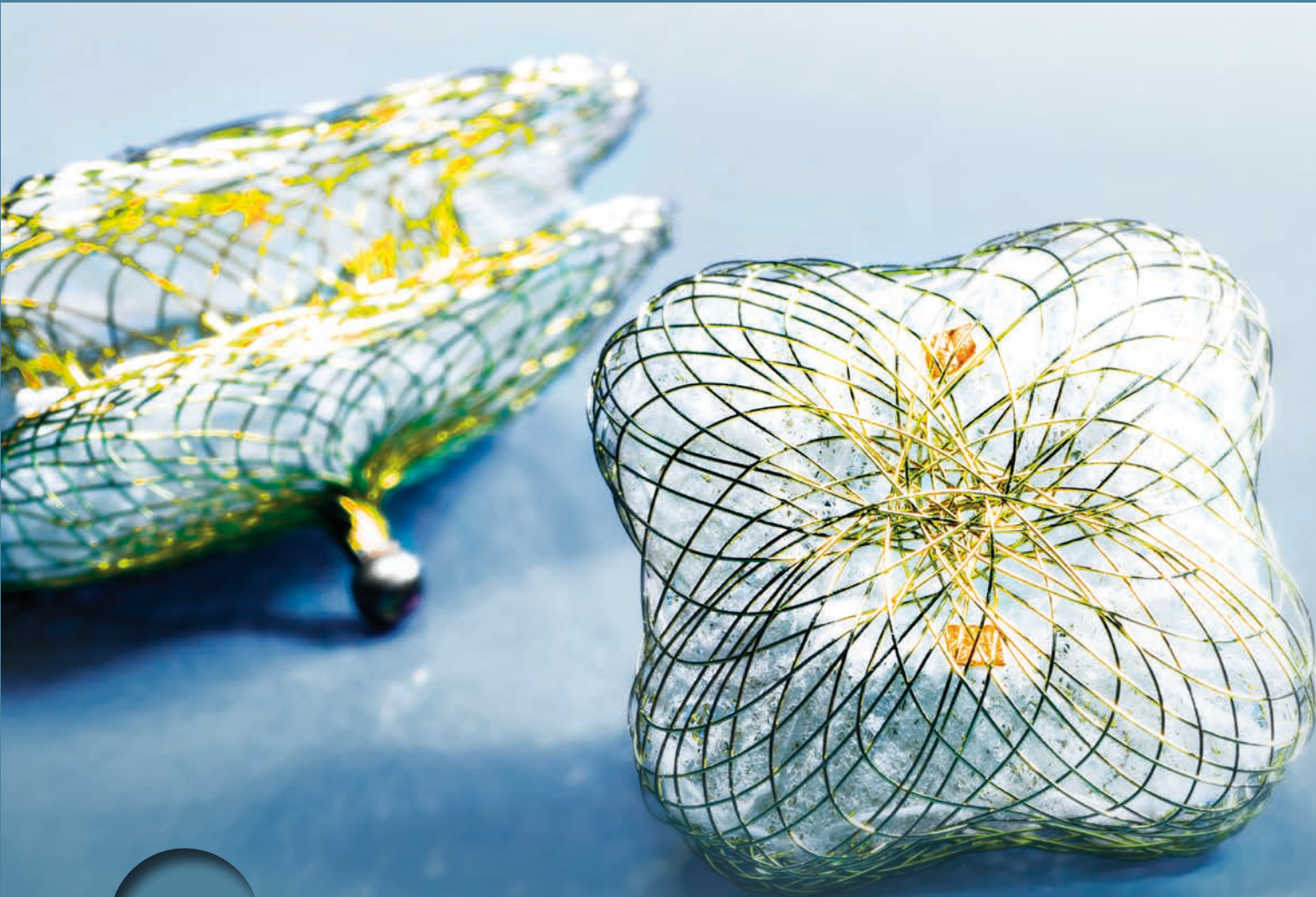
© Occlutech 2019. All rights reserved. Occlutech is a registered trademark. Individual product availability is subject to local regulatory clearance and may not be available in all territories. P17F06.002.03

PLD

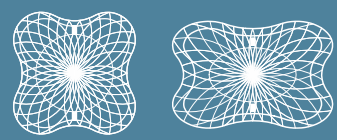
Perfecting Performance



Occlutech Paravalvular Leak Device



PLD



Paravalvular leak closure



PRODUCT FEATURES

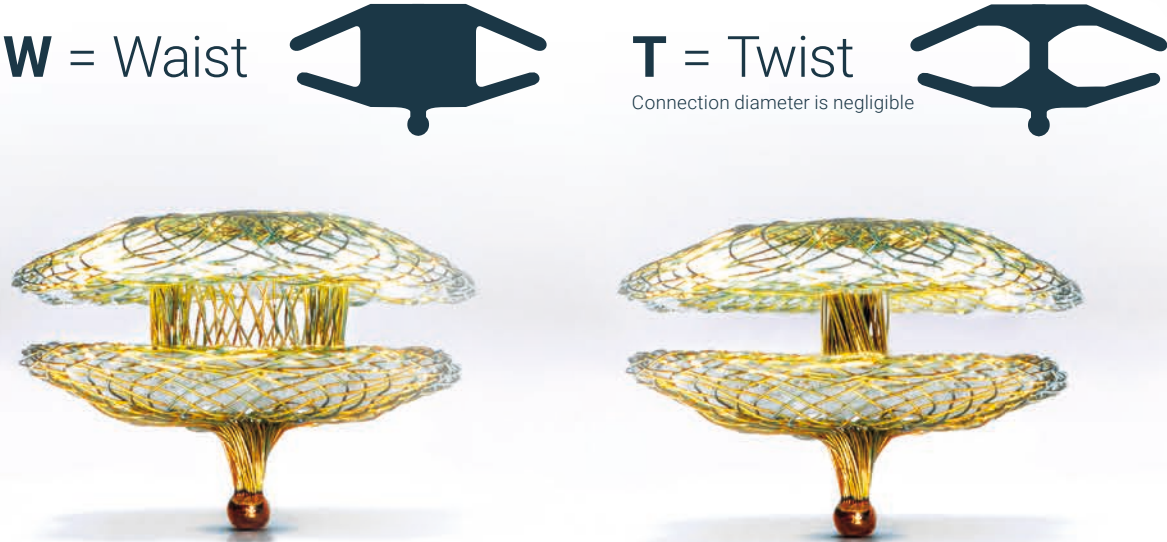
The Occlutech PLD is an ideal device for closing paravalvular leaks as it offers a range of unique features.

- Optimal positioning with two gold markers.
- Repositionable and fully retrievable.
- User-friendly and easy to use.
- Available with different design options for different PVL morphologies **Rectangular** and **Square**.

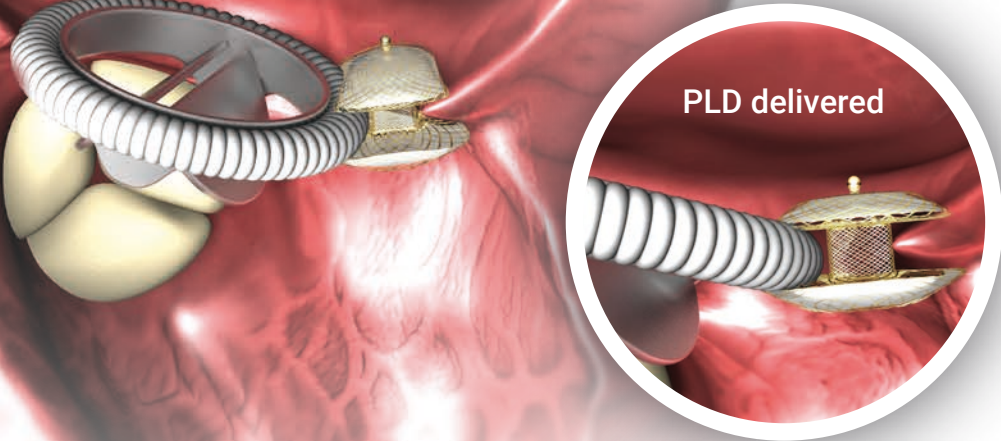


Waist & Twist

The Occlutech PLD is available with two types of connections between the discs, **Waist** or **Twist**. Example below shown on an Occlutech PLD Square.



Paravalvular leak



PLD delivered



PLD



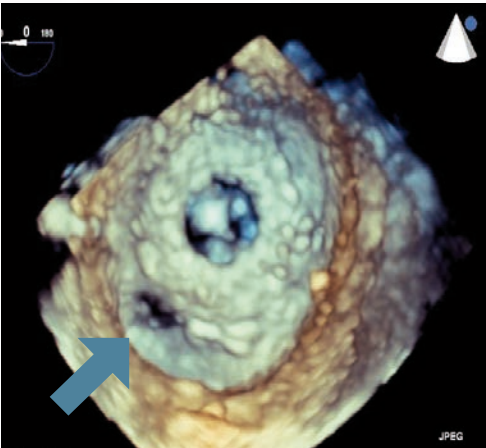
CLINICAL BENEFITS

The Occlutech PLD is specifically designed to meet the needs in paravalvular leak closure. The design of the device allows alignment over the leak and therefore the ability to achieve complete closure. The device can be delivered from various routes (transapical or transfemoral) using small delivery catheters.

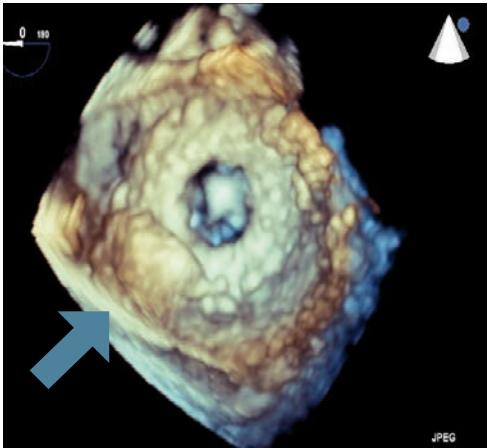
- First CE marked device specifically designed for the closure of the PVL.
- Improved device success.¹
- High success rate in achieving complete closure.²
- No interference with the prosthetic valve leaflets.
- No interference with flow dynamics.³

Content references:

1. Smolka et al, 2016, Transcatheter closure of paravalvular leaks using a paravalvular leak device – a prospective Polish registry
2. Yildirim et al, 2016, A New Specific Device in Transcatheter Prosthetic Paravalvular Leak Closure: A Prospective Two-Center Trial
3. Göktekin et al, 2016, Early experience of percutaneous paravalvular leak closure using a novel Occlutech occluder



Typical half-moon shaped paravalvular leak.



Paravalvular leak closed with Occlutech PLD (61PLD10W).